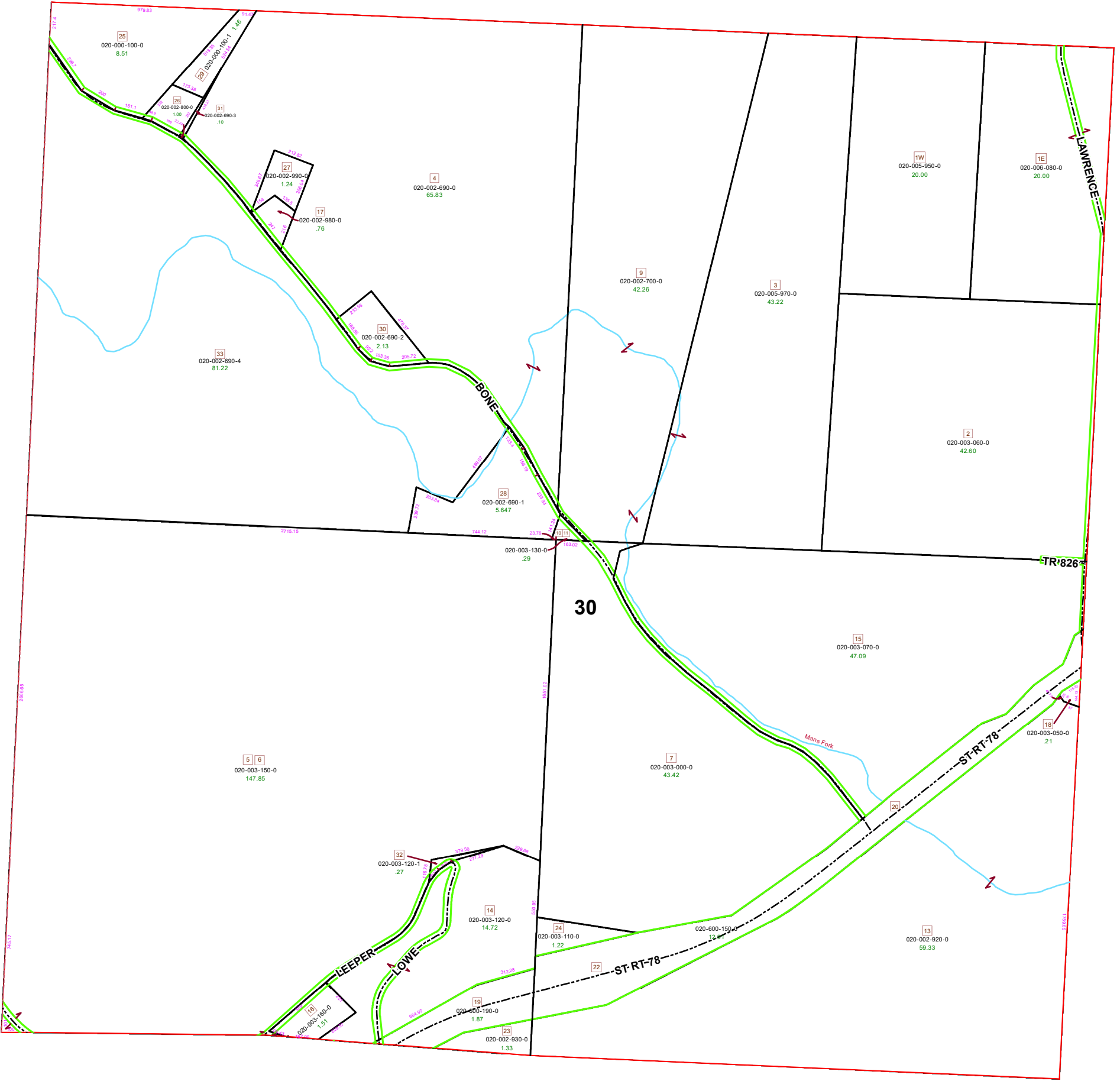


# BRISTOL TOWNSHIP SECTION 30 R 11 TWP 11 MORGAN COUNTY, OH



PIN	VOL	PAGE	Owner	LegalDescr	Acres
020-003-130-0	OR218	3062	ADKINS ALAN K	R11 T11 S30 SD 10-1	0.29
020-003-120-1	OR218	3062	ADKINS ALAN K	R11 T11 S30 SD 32	0.277
020-003-150-0	OR218	3062	ADKINS ALAN K	R11 T11 S30 SD 5-6	147.854
020-005-950-0	OR234	2483	EMRICK DOUGLAS A JR & TAMMY S	R11 T11 S30 SD 1 S	20
020-005-970-0	OR234	2483	EMRICK DOUGLAS A JR & TAMMY S	R11 T11 S30 SD 3 S	43.22
020-002-700-0	OR230	1704	EMRICK DOUGLAS A JR & TAMMY S	R11 T11 S30 SD 9 S	42.26
020-002-690-0	OR230	1704	EMRICK DOUGLAS A JR & TAMMY S	R11 T11 S30 SD 4 S	65.83
020-003-110-0	OR216	1691	ERICKSON LUCINDA	R11 T11 S30 SD 24	1.222
020-003-160-0	OR228	2664	ERICKSON LUCINDA D	R11 T11 S30 SD 16	1.517
020-003-120-0	OR216	1684	ERICKSON LUCINDA D TOD-BROOKE ELIZ	R11 T11 S30 SD 14	14.447
020-002-690-1	OR234	449	FRIES BRENDAN SCOTT	R11 T11 S30 SD 28	5.647
020-002-800-0	OR231	4888	GHEEN JONI	R11 T11 S30 SD 26	1
020-002-690-3	OR231	4888	GHEEN JONI	R11 T11 S30 SD 31	0.1
020-000-100-1	OR231	4888	GHEEN JONI	R11 T11 S20 SD 29	1.463
020-002-930-0	OR31	491	HANCHER CARLOS W & BETTY A TRUST	R11 T11 S30 SD 23 S	1.33
020-002-920-0	OR55	214	HANCHER CARLOS W & BETTY A TRUST	R11 T11 S30 SD 13 S	59.33
020-002-980-0	OR178	129	HOLLAND SHIRLEY A	R11 T11 S30 SD 17	0.76
020-002-990-0	OR178	129	HOLLAND SHIRLEY A	R11 T11 S30 SD 27	1.24
020-003-000-0	OR37	90	HOOK WINIFRED ANN	R11 T11 S30 SD 7	43.42
020-003-070-0	OR192	617	LAWRENCE NINA M	R11 T11 S30 SD 15 S	47.09
020-003-060-0	OR192	617	LAWRENCE NINA M	R11 T11 S30 SD 2 LE	42.6
020-002-690-2	OR85	611	RAY RICHARD DEAN & TAMMY LYNN	R11 T11 S30 SD 30 S	2.136
020-002-690-4	OR233	4393	ROCCO JOHN JR & RICHARD L	R11 T11 S30 SD33	81.22
020-600-190-0	OR127	231	STATE OF OHIO	R11 T11 S30 JOHNS	1.87
020-600-150-0	OR212	1537	STATE OF OHIO	R11 T11 S30 BONE S	12.91
020-000-100-0	OR228	3217	TRIPLET ADAM J	R11 T11 S30 SD 25	8.517
020-003-050-0	OR156	460	WALLACE SILAS ABRAHAM	R11 T11 S30 SD 18	0.217
020-006-080-0	OR143	369	WHITEHOUSE JERRY L ROSALIE J	R11 T11 S30 SD 1 E	20

**Boundaries**

**Type**

Hydro

Lot

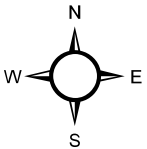
Parcel

Roads

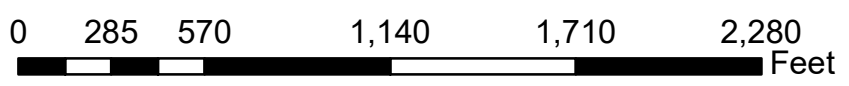
Section

Township

Bristol Sections



Source: Morgan County Engineer's Office  
 Author: Marcia Wolfe  
 Date: 6/4/2020



Disclaimer: The information that these maps contains is for reference purposes only. Please bring any errors to the attention of the Engineer's Office staff.  
 Thank you